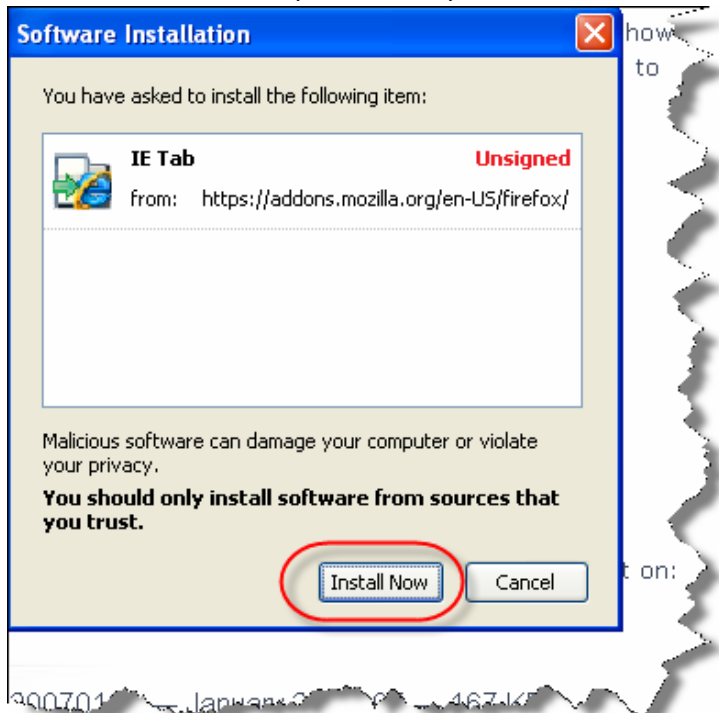


How to Install an Internet Explorer Tab in Firefox

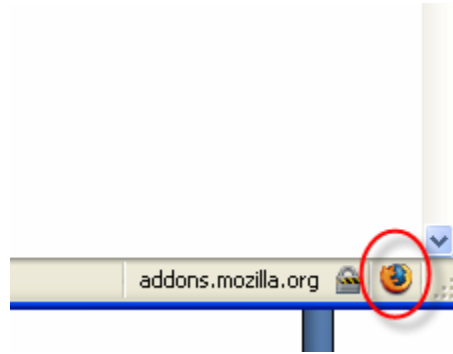
1. Open Firefox and browse to <https://addons.mozilla.org/en-US/firefox/addon/1419>.
2. Click on **Install Now for Windows** (see below).



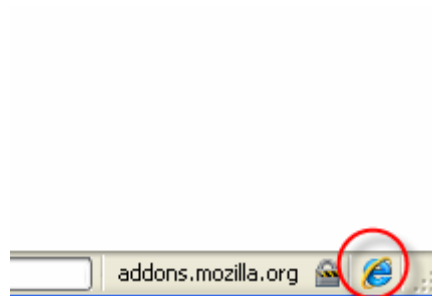
3. Click on **Install Now** (see below). After the software is installed, you will need to restart Firefox.



- After restarting Firefox, you'll see an orange globe icon in the lower right-hand corner of the browser window (see below).



- To view a Web page in Internet Explorer, simply click the orange globe icon. The icon will change to the Internet Explorer logo to confirm that the page is being viewed with the Internet Explorer browser. To switch back to Firefox, simply click again!



- While not required, you can specify websites that should always be viewed using Internet Explorer by choosing **Tools**, then **IE Tab Options**, and entering the urls of the sites. For further help, visit <http://ietab.mozdev.org>.

